

# NEWS TODAY

## Invasive Species can benefit from extreme weather: A Study in Nature Ecology & Evolution journal

- An 'invasive species' refers to a species that is alien to a specific ecosystem and its introduction can potentially lead to economic, or environmental harm, or pose a threat to human health.
  - ⊖ Only those alien species that establish and spread with negative impacts on biodiversity, local ecosystems, and species are called invasive alien species.
- Findings of Study
  - ⊖ Invasive species, often introduced by humans, possess traits such as adaptability and high reproductive rates, which enable them to survive in disturbed ecosystems.
  - ⊖ They are also often very good at dispersing their seeds, allowing them to quickly colonize disturbed areas.
  - ⊖ Extreme weather can eliminate native species, freeing up resources like water and space, hence allowing non-native species to establish themselves.
- Impact
  - ⊖ **Ecological Impact:** 2nd largest reason for species extinction, reducing biodiversity, competing with native organisms for limited resources, and altering habitats.
  - ⊖ **Economic Impact:** global economic cost of invasive alien species exceeded \$423 billion annually in 2019.
  - ⊖ **Food Security:** Invasive species are major cause of crop loss and degraded soil quality.
  - ⊖ **Health Impact:** They can serve as vectors for infectious diseases.

### ➤ Global Efforts

- ⊖ **Invasive Species Specialist Group (ISSG)** is a global network of scientific and policy experts on invasive species, and was established in 1994.
  - ◆ It is organized under the auspices of the **Species Survival Commission (SSC)** of the **International Union for Conservation of Nature (IUCN)**.

## Judgments by Chief Commissioner of Persons with Disabilities to promote accessibility and rights of differently abled individuals

- **Court of Chief Commissioner of Persons with Disabilities (PwD)** delivered following two judgments:
  - ⊖ Court mandated that any government office in the country, operating from buildings that are not accessible to Divyangjan, must **relocate their services to the ground floor or accessible location** within same facility.
  - ⊖ In another case, it highlighted that Airline's policy necessitating **medical clearance categories of PwD**, is inconsistent with **global Civil Aviation Requirements**.
    - ◆ Court emphasized that **all airlines operating in the country (Indian or foreign)**, are responsible for implementing **Rights of Persons with Disabilities Act 2016 (RPwD Act)**.
- **About Office of Chief Commissioner of Persons with Disabilities**
  - ⊖ It was set up under **Persons with Disabilities Act, 1995 (PwD Act)**.
    - ◆ **RPwD Act 2016** (which replaced PwD Act, 1995) provides for **Chief Commissioner for Persons with Disabilities and two Commissioners**.
  - ⊖ It has been mandated to take steps to **safeguard the rights of PwD** and to identify any programme/ policy inconsistent with **RPwD Act**
  - ⊖ **Ministry:** Ministry of Social Justice & Empowerment.



### Other steps taken for PwDs by Ministry of Social Justice & Empowerment

- **National Action Plan (NAP) for Skill Development of PwDs** to provide skill training to PwDs for enabling them to become self-reliant.
  - ⊖ NAP is implemented under **Scheme for Implementation of Rights of Persons with Disabilities Act 2016**.
- **Scheme of Assistance to PwDs for Purchase/Fitting of Aids /Appliances (ADIP Scheme)**.
- **Accessible India Campaign (Sugamya Bharat Abhiyan)**, focuses on developing accessible physical environment, transportation system and Information & communication ecosystem to PwDs.

## Deendayal Antyodaya Yojana - National Rural Livelihood Mission and SIDBI sign MoU to help Self Help Groups (SHGs)

- This partnership focuses on **multiple aspects to boost women entrepreneurship** like:
  - ⊕ **Enhanced capacity and ability of State Rural Livelihood Missions (SRLM) teams** to promote the graduation of seasoned SHG members into micro-entrepreneurs;
  - ⊕ Establishment of a reliable and sensitive **support architecture for women-led enterprises**;
  - ⊕ **Implementation of standardized protocols** within DAY-NRLM to support women-led enterprises.
- **Role of SHGs in Women entrepreneurship**
  - ⊕ **Act as bridge between women entrepreneurs** who have the will to begin an enterprise but do not have the resources to fulfil their dream, and the finances needed for it. **Ex:** Kerala's Kudumbashree model.
  - ⊕ Work as **platforms that promote solidarity and bring women together on issues** of health, nutrition, gender parity and gender justice. **Ex:** Denlang SHG.
  - ⊕ Creates an environment for them to develop **greater agency and decision-making skills especially among rural women**.
- **About DAY-NRLM**
  - ⊕ **Ministry:** Ministry of Rural Development.
  - ⊕ It is a **flagship poverty alleviation program** through building strong institutions for the poor, particularly women, and providing access to financial services and livelihoods.
  - ⊕ It **adopts a demand-driven approach**, enabling the States to formulate their own State-specific poverty reduction action plans.

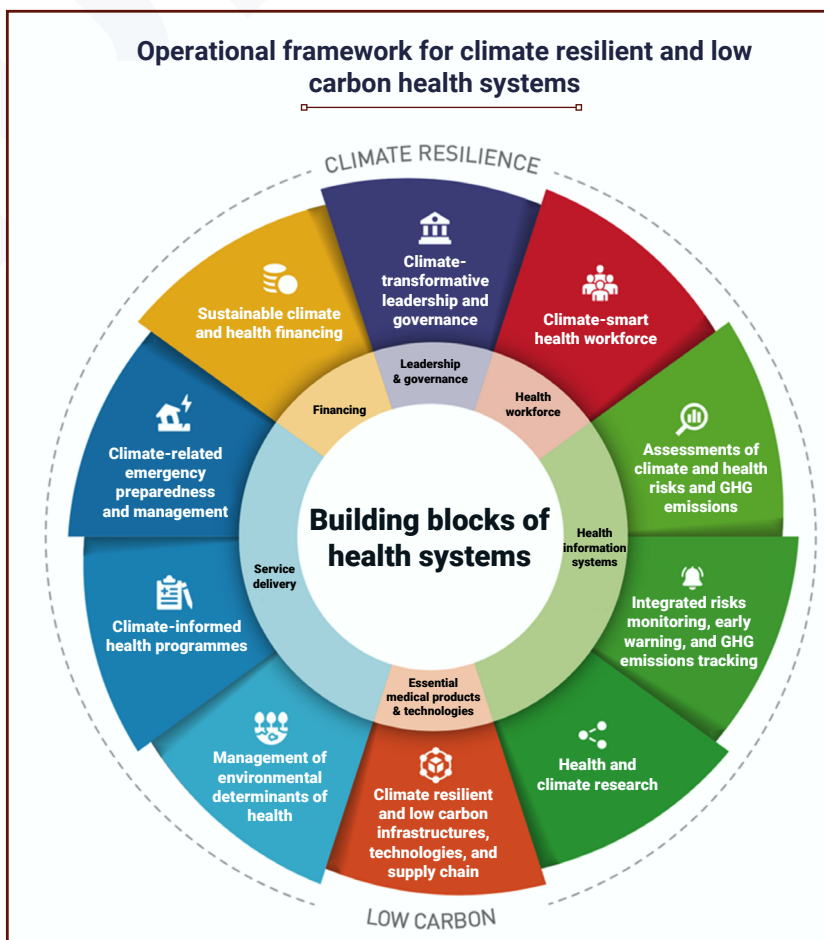
### About Small Industries Development Bank of India (SIDBI)



- It is a **principal Financial Institution** for promotion, financing and development of the **MSME sector**.
- Established in **1990** by Government as a wholly owned **subsidiary of Industrial Development Bank of India (IDBI)**.
- It is a **statutory body under Ministry of Finance**.

## WHO unveils framework for climate resilient and low carbon health systems

- Framework aims to **enhance the resilience of health systems** while simultaneously **reducing greenhouse gas emissions** to help safeguard the health of communities worldwide.
- Its **key objectives** includes:
  - ⊕ **Guiding health sector professionals** through collaboration.
  - ⊕ **Developing comprehensive and practical strategies** (e.g. national climate change and health strategy), plans (e.g. health component of National Adaptation Plan (HNAP) etc).
  - ⊕ **Defining roles and responsibilities** for health decision-makers.
- Framework proposes interventions around the **10 components** (see infographic)
- Framework is important to implement the **Alliance for Transformative Action on Climate and Health (ATACH)** goals.
  - ⊕ ATACH, a **WHO initiative**, established in 2022, is an **informal voluntary network** which works to realize the ambition set at COP26 to **build climate resilient and sustainable health systems**.
- **Need for sustainable health system:**
  - ⊕ Help the health sector **reduce its GHG emissions** (5% of the global total).
  - ⊕ Reduce environmentally **harmful Healthcare waste**. (15% is considered **hazardous material**)
  - ⊕ **Reduce cost** to increase accessibility and affordability.



## Supreme Court (SC) issues Guidelines to High Courts (HC) to monitor the early disposal of cases against MPs/MLAs

- Guidelines were issued by SC while hearing a case challenging **Section 8(3) of the Representation of People Act, 1951**.
  - ⊖ **Section 8(3) of the Representation of People Act, 1951**, imposes a **six-year ban** from contesting election by persons convicted of offenses with a **minimum two-year sentence**.
- **SC issued following guidelines:**
  - ⊖ Registration of **suo motu cases** titled '**In Re Designated courts for MPs and MLAs**' by chief justices of HCs to monitor such cases.
  - ⊖ Such cases can be heard by a **Chief Justice-led special bench**.
  - ⊖ **Designated court shall give priority –**
    - ◆ to criminal cases against MPs/MLAs **punishable with death or life imprisonment**,
    - ◆ cases punishable with imprisonment for 5 years or more,
    - ◆ **Other cases**
    - ◆ Trial court shall not adjourn the cases except for rare and compelling reasons.
  - ⊖ **HCs should evolve measures for effective monitoring** of such cases by **invoking its powers under Article 227**.
    - ◆ **Under Art 227 (1)**, HC shall have **superintendence over all courts** and tribunals throughout the territories in relation to which it exercises jurisdiction.

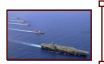
### ➤ Related SC judgments

- ⊖ In **2018**, SC made it mandatory for **political parties to publish the details** of criminal cases pending against their candidates, including on their websites.
- ⊖ **Lily Thomas v Union of India, 2013**: legislators who have been awarded a minimum 2 years of imprisonment would cease to be members of the house.
- ⊖ **Union of India v Association for Democratic Reforms, 2002**: Electors had fundamental right to know antecedents of candidates contesting elections.

## Solar Module Manufacturing capacity reached 60 GW

- **Solar modules** are made by **connecting photovoltaic (PV) cells or solar cells**. They are manufactured from semiconductor materials like **crystalline silicon**.
  - ⊖ Solar modules **convert the light energy captured from the sun into electric energy**.
- The achievement is significant as India aims to **build 500 GW of renewable energy capacity by 2030**, of which **solar energy contribution** will be around **300 GW**.
- **Status of Solar Module:**
  - ⊖ India has over **100 solar module manufacturers**, with **27 selected manufacturers** having a capacity of 50 GW.
  - ⊖ Exported 3,900 MW of solar modules, with the **potential to increase to 30 GW annually**.
  - ⊖ **High-quality Indian solar modules** are in demand globally, particularly in North America and Europe.
- **Challenges**
  - ⊖ **Lack of manufacturing capacity** for the initial stages of the photovoltaic (PV) value chain, namely polysilicon and wafer.
  - ⊖ **High Capital and Operating Cost**: setting up a solar cell production line is capital intensive.
  - ⊖ **Lacks Research and Development**: in terms of infrastructure, quality testing facility, and skilled human resources.
  - ⊖ **Other challenges**: Export Limitations, and technology adoption lag.
- **Government Initiatives**
  - ⊖ **PLI scheme for solar PV module manufacturing**, which is expected to add 48 GW of new manufacturing capacity over the next three years.
  - ⊖ **40% basic customs duty to encourage domestic manufacturing**.
  - ⊖ **Approved List of Models and Manufacturers** by Ministry of New and Renewable Energy, that enlists eligible models and manufacturers complying with BIS Standards.
  - ⊖ **Preference in Public Procurement**, through 'Public Procurement (Preference to Make in India) Order'

## Also in News



### Indo-Pacific Maritime Domain Awareness (IPMDA)

- Navy Chief during 4th **Goa Maritime Conclave (GMC)** highlighted the role of IPMDA.
  - ⊖ GMC Indian Navy's initiative for **multinational maritime security** collaboration.
- IPMDA is a **technology and training initiative** to enhance **maritime domain awareness** in the Indo-Pacific region.
  - ⊖ It was announced at the **2022 Quad Leaders' Summit in Tokyo**.
  - ⊖ **Functions:**
    - ◆ Tracking of **dark shipping (vessels engaging in illegal activity)** and other tactical-level activities.
    - ◆ Enhance **maritime view** of near-real-time activities in partners' waters,
    - ◆ It integrates **3 critical regions** of the Indo-Pacific, viz. **Pacific Islands, Southeast Asia, Indian Ocean Region**.



### Insolvency and Bankruptcy Code (IBC) 2016

- Supreme Court upheld sections of IBC 2016 **relating to the appointment of resolution professional (RP), adjudicatory process and interim moratorium**.
- IBC was introduced to **overhaul the corporate distress resolution regime in India** and create a **time-bound mechanism for resolution**.
  - ⊖ It is applicable to **Companies, Limited Liability Partnerships, Partnership Firms and Individuals**.
  - ⊖ It provides for:
    - ◆ **Adjudicating Authority**: NCLT/NCLAT for Companies and LLPs and DRTs/DRATs for Individuals and Partnership Firms.
    - ◆ **Insolvency and Bankruptcy Board of India**, as a regulatory body for Insolvency Professionals, Insolvency Professional Agencies and Information Utilities.



### Central Bureau of Investigation (CBI)

- The Centre claimed in the Supreme Court that the CBI is an independent agency and the Union government has no control in CBI's functioning.
- **About CBI:**
  - ⊕ The CBI is **not a statutory body**. Its derives power to investigate from the **Delhi Special Police Establishment Act, 1946**.
  - ⊕ It functions under **Dept. of Personnel, Ministry of Personnel, Pension & Public Grievances**.
  - ⊕ It is designated as the **National Central Bureau of India for INTERPOL**.
- **General consent** is required under section 6 of DPSE Act for the CBI to operate seamlessly within states.



### e-way Bill

- Recently, **e-way bill generation crossed 10 crore** for the first time since its introduction.
- e-way Bill is an **electronic document generated on a portal**, evidencing the movement of goods and indicating whether tax has been paid.
  - ⊕ As per CGST Rules, 2017, consignment value of **more than ₹50,000 is required to generate an e-way bill**.
  - ⊕ This is required for movements **between the two States and within a State**.
  - ⊕ However, a **State, can decide the threshold for the value of goods** to be applicable for movement within its boundary.



### Phreatomagmatic eruptions

- A new island **emerged Off Japan** after an **underwater volcano eruption**.
  - ⊕ It emerged after a series of eruptions near Iwoto Island, part of **Ogasawara Island chain** in the western Pacific.
- Scientists said it was formed due to **phreatomagmatic eruptions**.
  - ⊕ It is a type of eruption that **involves both magma and water**, which typically interact **explosively**, leading to **concurrent ejection of steam** and pyroclastic fragments.
  - ⊕ It is considered as **most common and hazardous** type of volcanic eruption on Earth.



### Pulsars

- Five new pulsars were recently discovered with FAST (**Five-hundred Aperture Spherical Telescope**).
  - ⊕ FAST is the **world's largest single-dish radio telescope**, located in Chinese province **Guizhou**.
- Pulsars are **rapidly rotating neutron stars** (remains of cores of massive stars that have reached the end of their lives).
  - ⊕ They are **highly magnetized, and rotating at enormous speeds**.
  - ⊕ They emit a **beam of electromagnetic radiation** from their magnetic poles while rotating.
  - ⊕ '**Period**' of the pulsar refers to time when pulsar appears to 'switch off' at points when the **light is facing away from Earth**.



### Pusa-2090

- **Indian Agricultural Research Institute (IARI)** has bred Pusa-2090 that yields just as much – and matures in only **120-125 days**.
  - ⊕ Its maturing period gives ample time to farmers to clear fields before the wheat sowing season in mid-November.
- It is a cross between **Pusa-44 and CB-501**, which is an early-maturing Japonica rice line.



### SOFIA (Stratospheric Observatory for Infrared Astronomy)

- Scientists have detected **atomic oxygen in the atmosphere of Venus** through SOFIA airborne observatory.
- Venus (aka **Earth's twin**) is the **second planet from Sun** and Earth's nearest planetary neighbour.
  - ⊕ Unlike Earth, it **rotates clockwise** (east to west) i.e backward.
  - ⊕ It has **no moons/rings** and is the **hottest planet** due to "runaway greenhouse effect".
- SOFIA is the world's largest **airborne astronomical observatory** (joint program of **NASA and German Aerospace Center**).
  - ⊕ It flies in the **stratosphere**, above 99% of Earth's infrared-blocking atmosphere to **observe the infrared universe**.

## Places in News



### Myanmar (Capital: Nay Pyi Taw)

- Myanmar junta leader said Country is at risk of breaking apart due to clashes.
- **Political features**
  - ⊕ Not landlocked.
  - ⊕ Bordered by China (north and northeast), Laos (east), Thailand (southeast), Bangladesh (west), and India (northwest).
  - ⊕ **Maritime boundaries:** Andaman Sea and Bay of Bengal to south and southwest.
- **Geographical features**
  - ⊕ **Mountains:** Patkai Range, Naga Hills, and Chin Hills form border between India and Myanmar.
  - ⊕ **Mount Hkakabo** (5,881 metres is highest peak).
  - ⊕ In south, it has **Rakhine Mountains** (Arakan Mountains)
  - ⊕ **Plateaus:** Shan Plateau
  - ⊕ **Rivers:** Irrawaddy, Salween, Chindwin, and Sittang.

